



Ersatzteile-Liste
Parts List
Catalogo Ricambi

Nr. **508**
No.

Motor Type
Engine Type
Motore Tipo

244 MC LC
244 GS LC



Ausgabe
Edition **1985**
Edizione



BOMBARDIER-ROTAX GMBH
MOTORENFABRIK
A-4623 Gunskirchen - Austria
Telefon: (07246) 271-0*, Telex: 25546 brgk a
Telegrammadresse: Bombrotax Gunskirchen



aprilia



ROTAX

Catalogo Ricambi
Parts List
Ersatzteile - Liste

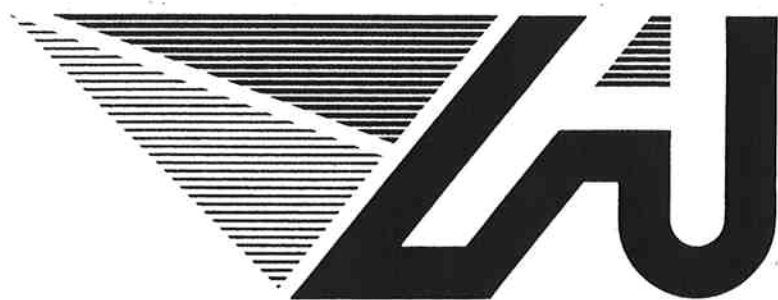
No. **508**
Nr.

Motore Tipo
Engine Type
Motor Type

244 MC LC
244 GS LC

Modello aprilia
aprilia Model
aprilia Model

CROSS
REGOLARITA'



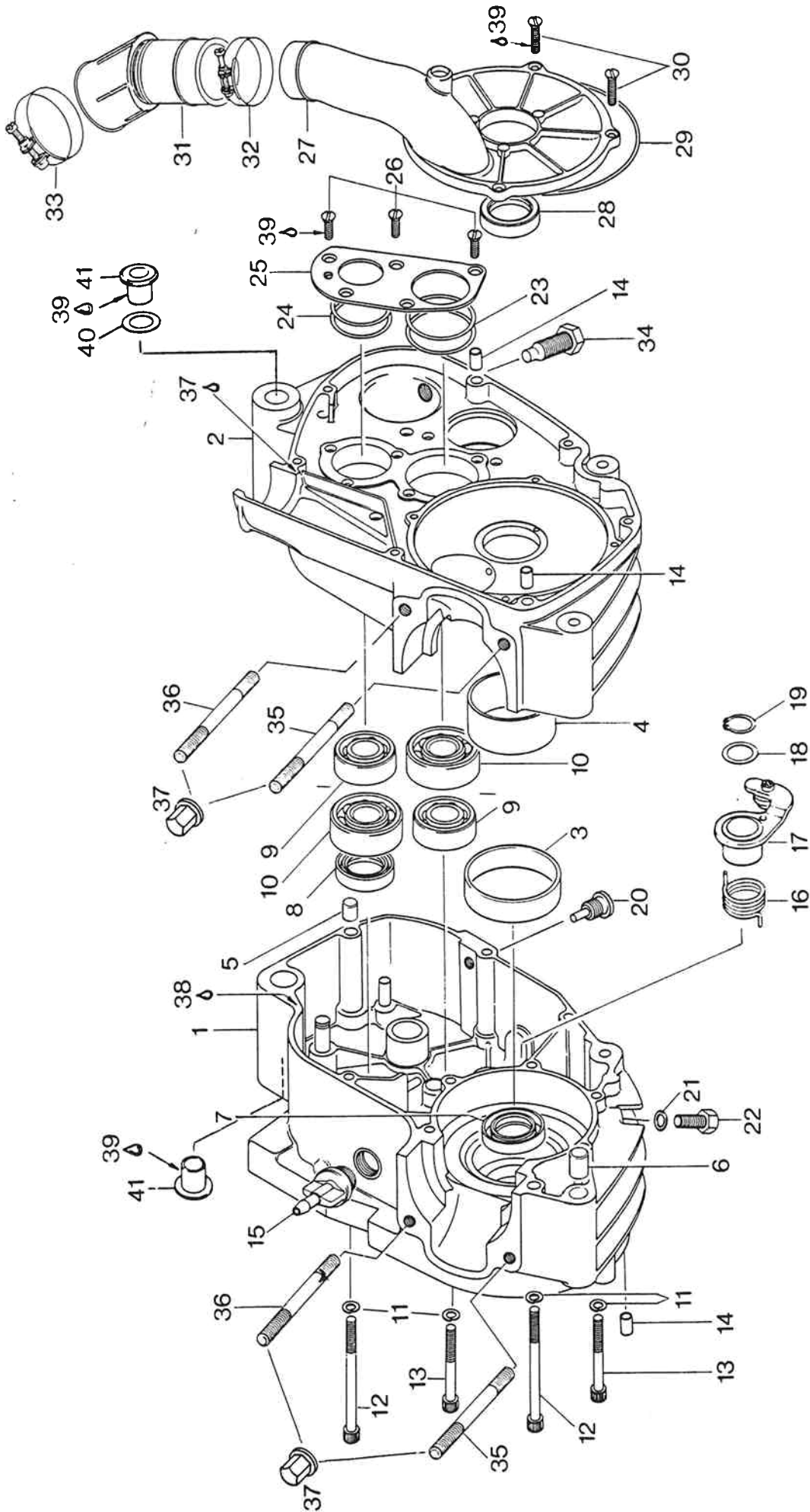
Edizione
Edition
Ausgabe

Jan. 1985

Inhalts-Verzeichnis
Table of Contents
Indice dei Capitoli

Seite
Page
Pagina

- 3 Gehäuse, Drehschieberdeckel
Crankcase, Disk Valve Cover
Carter Motore, Coperchio Valvola
- 7 Kurbelwelle, Kolben, Zylinder, Zylinderkopf
Crankshaft, Piston, Cylinder, Cylinder Head
Albero Motore, Pistone, Cilindro, Testa Cilindro
- 13 Getriebe
Transmission
Trasmissione
- 19 Kupplung, Kickstarter
Clutch, Kick Start
Frizione, Messa in Moto
- 23 Zünderdeckel, Kupplungsdeckel, Wasserpumpe
Magneto Cover, Clutch Cover, Water Pump
Coperchio Volano, Coperchio Frizione, Pompa Acqua
- 27 Magnetzündler-Generator 12V 60W
Magneto-Generator 12V 60W
Volano 12V 60W
- 31 Werkzeug
Tools
Attrezzi

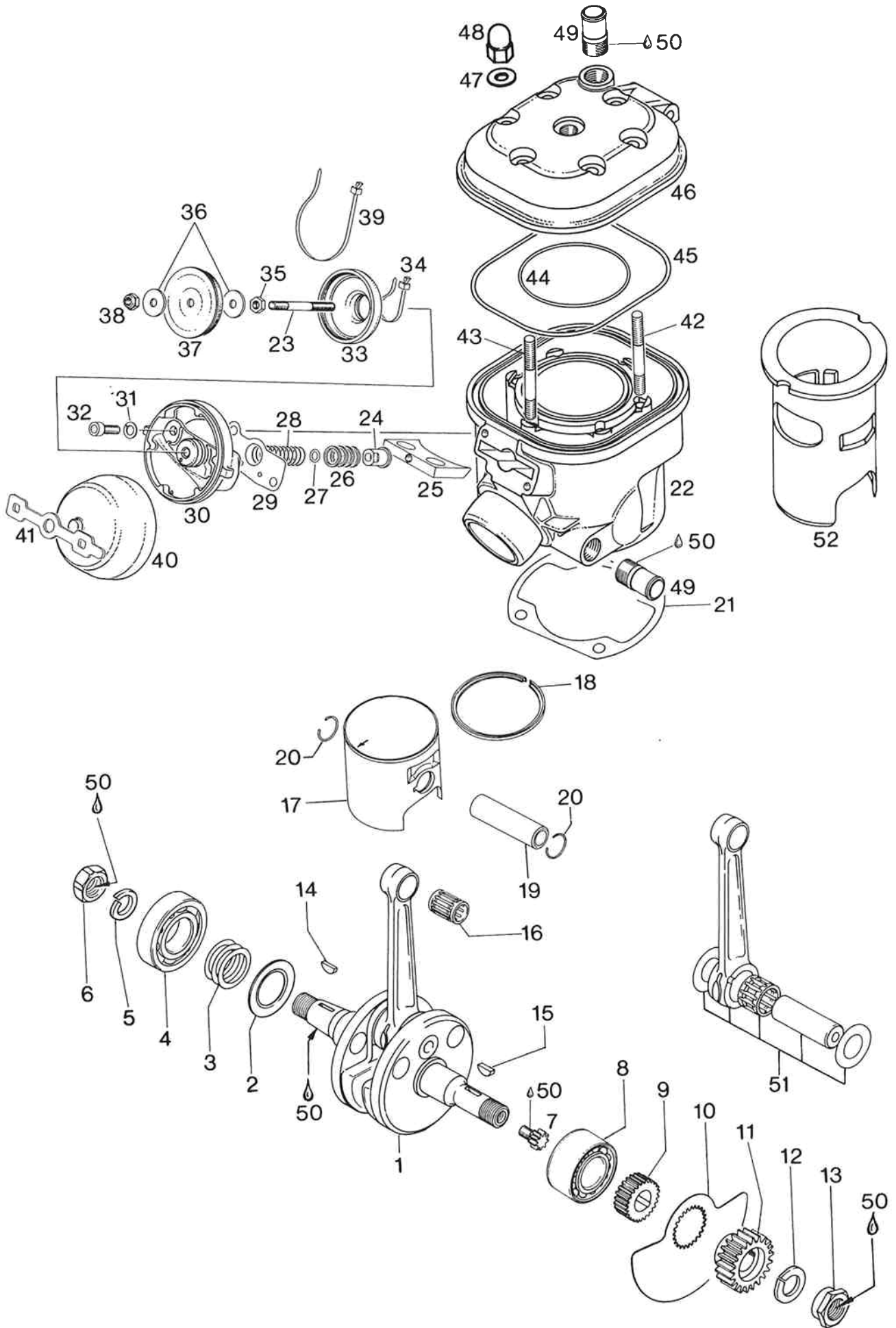


Gehäuse, Drehschieberdeckel
Crankcase, Disk Valve Cover
Carter Motore, Coperchio Valvola

Bild-Nr. Ill. No. Fig.	Teile-Nr. Part No. Codice	B e z e i c h n u n g D e s c r i p t i o n D e s c r i z i o n e	Stück Qty Qtà
1 - 6	292 473	Gehäuse kpl. / crankcase assy. / coppia carter motore	1
3	960 767	Gehäusering magnetseitig / ring, crankcase, magneto side / anello carter, lato magnete	1
4	260 400	Gehäusering kupplungsseitig / ring, crankcase, clutch side / anello carter, lato frizione	1
5	229 140	Paßhülse 9,8 Ø x 10 / dowel, locating / spina carter	1
6	229 160	Paßhülse 13,8 Ø x 15 / dowel, locating / spina carter	1
7	230 425	Wellendichtring 28x38x7 / oil seal / corteco	1
8	230 421	Wellendichtring 28x38x7 / oil seal / corteco	1
9	932 030	Rillenkugellager 6203 / ball bearing / cuscinetto	2
10	932 432	Rillenkugellager 6204 / ball bearing / cuscinetto	2
11	945 751	Federring A6 / lock washer 6 / rondella grower 6	10
12	241 871	Zylinderschraube M6 x 70 / screw, allen head / vite a testa cilindro	5
13	241 820	Zylinderschraube M6 x 45 / screw, allen head / vite a testa cilindro	5
14	949 900	Paßhülse 8,4 Ø x 10 / dowel, locating / spina carter	5
15	241 925	Entlüfterschraube M18 x 1,5 / oil filler cap / tappo immissione olio	1
16	239 750	Indexfeder / spring, index / molla indice	1
17	248 977	Rollenindex kpl. / roller assy., index / indice a rulli	1

Bild-Nr. Ill. No. Fig.	Teile-Nr. Part No. Codice	B e z e i c h n u n g D e s c r i p t i o n D e s c r i z i o n e	Stück Qty Qtà
18	227 800	Anlaufscheibe 16,2/21/0,4 / washer / spessore	1
19	945 840	Sicherungsring 15 x 1 / locking ring / seger	1
20	241 781	Magnetschraube M12 x 1,5 / plug, magnetic drain / tappo scarico olio	1
21	950 141	Dichtring C8 x 14 / gasket ring / rondella tappo spurgo carter	1
22	940 581	Sechskantschraube M8 x 16 / screw, hex. head, crankcase drain / vite a testa esagone	1
23	227 610	Ausgleichscheibe 40/46,5/0,5 / shim, transmission clutch shaft bearing / spessore albero primario	nach Bedarf as required a richiesta
	227 611	Ausgleichscheibe 40/46,5/0,3 / shim, transmission clutch shaft, bearing / spessore albero primario	nach Bedarf as required a richiesta
	227 612	Ausgleichscheibe 40/46,5/0,1 / shim, transmission clutch shaft bearing / spessore albero primario	nach Bedarf as required a richiesta
24	227 520	Ausgleichscheibe 34/39,5/0,5 / shim, transmission main shaft bearing / spessore albero secondario	nach Bedarf as required a richiesta
	227 521	Ausgleichscheibe 34/39,5/0,3 / shim, transmission main shaft bearing / spessore albero secondario	nach Bedarf as required a richiesta
	227 522	Ausgleichscheibe 34/39,5/0,1 / shim, transmission main shaft bearing / spessore albero secondario	nach Bedarf as required a richiesta
25	227 555	Halteblech / retaining plate, trans- mission bearings / piastra fissaggio cuscinetti	1
26	940 315	Senkschraube M5 x 12 / screw, countersunk slot head / vite fissaggio piastra cuscinetto	5
27	212 430	Drehschieberdeckel / disk valve cover / coperchio valvola	1
28	230 425	Wellendichtring 28x38x7 / oil seal / corteco	1
29	230 310	O-Ring 114-2 / O-ring, disk valve cover / anello coperchio valvola	1

Bild-Nr. Ill. No. Fig.	Teile-Nr. Part No. Codice	B e z e i c h n u n g D e s c r i p t i o n D e s c r i z i o n e	Stück Qty Qtà
30	940 510	Senkschraube M5 x 16 / screw, countersunk slot head / vite coperchio valvola	4
31	267 890	Vergaserwinkelrohr / angular tube, carburetor / flangia gomma carburatore . .	1
32	251 845	Schlauchschelle 42 kpl. / hose clamp, carburetor adapter / fascetta manicotto carburatore	1
33	251 820	Schlauchschelle 47 kpl. / hose clamp, carburetor adapter / fascetta manicotto carburatore	1
34	241 777	Ausrückschraube M12 / screw, kick starter stop / fermo messa in moto	1
35	841 430	Stiftschraube M8 x 104 / stud, cylinder front / colonnetta cilindro	2
36	841 350	Stiftschraube M8 x 90 / stud, cylinder / colonnetta cilindro	2
37	842 471	Bundhutmutter M8 / cap nut / dado a cappello	4
38	899 784	Flanschdichtung Spezial 50 ccm, LOCTITE 574, orange / LOCTITE sealing material, orange 50 c.c. / flacone LOCTITE arancione 50 cc	nach Bedarf as required a richiesta
39	899 786	Schraubensicherungsmittel 6 ccm, LOCTITE 242, blau / means of securing, LOCTITE blue, 6 c.c. / flacone LOCTITE blu 6 cc .	nach Bedarf as required a richiesta
40	944 460	Ausgleichscheibe 20,5/30/0,2 / shim / spessore	nach Bedarf as required a richiesta
41	247 550	Bundbüchse / sleeve / bussola	2



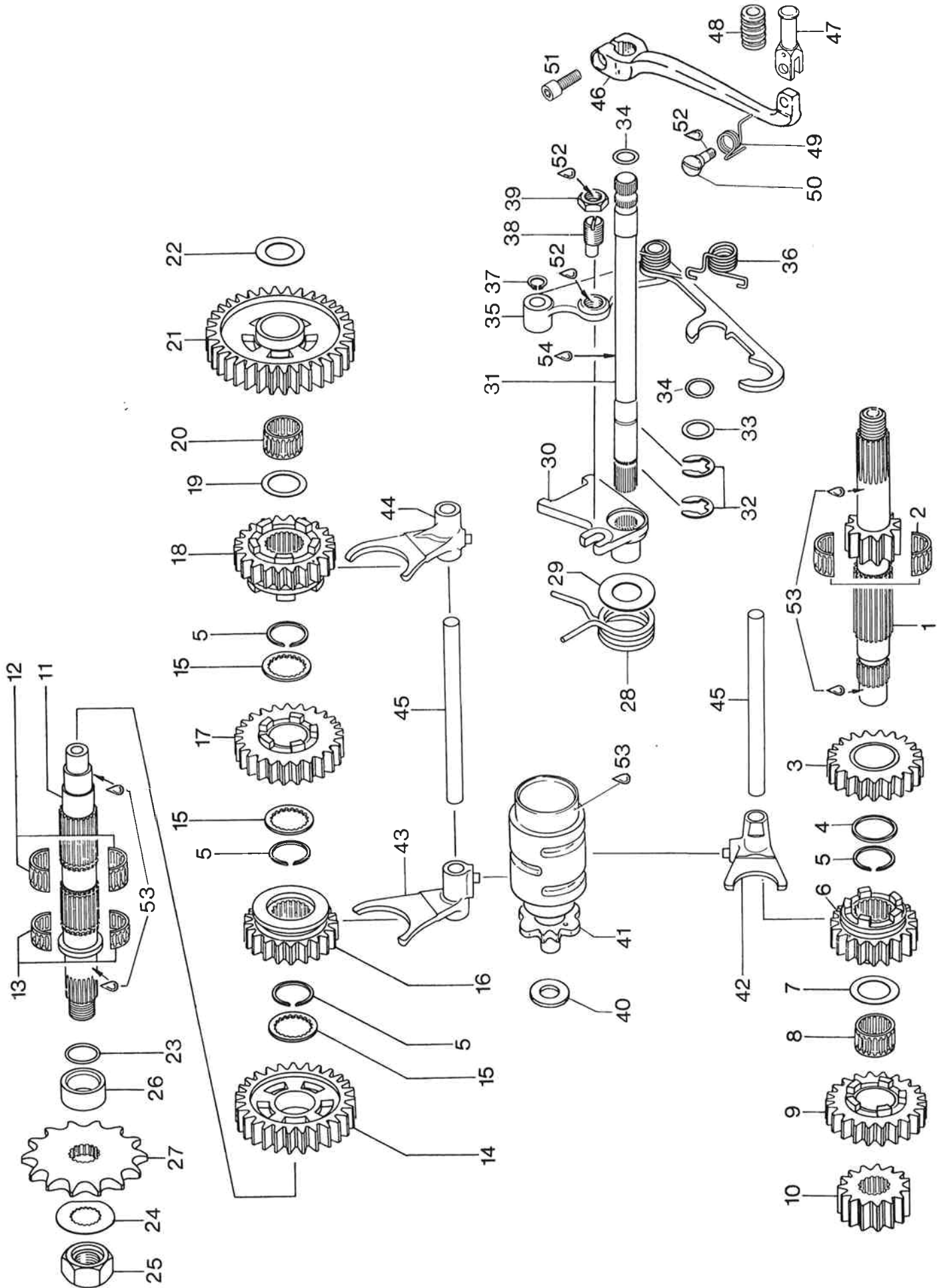
Kurbelwelle, Kolben, Zylinder, Zylinderkopf
Crankshaft, Piston, Cylinder, Cylinder Head
Albero Motore, Pistone, Cilindro, Testa Cilindro

Bild-Nr. Ill. No. Fig.	Teile-Nr. Part No. Codice	B e z e i c h n u n g D e s c r i p t i o n D e s c r i z i o n e	Stück Qty Qtà
1	292 027	Kurbelwelle kpl. / crankshaft assy. / albero motore completo	1
2	227 755	Radiusscheibe 30,9/50/0,75 / distance ring, magneto side / distanziale albero motore	1
3	944 582	Ausgleichscheibe 30,4/40,5/0,3 mm / shim, crankshaft magneto / spessore albero motore	nach Bedarf as required a richiesta
	944 583	Ausgleichscheibe 30,4/40,5/0,1 mm / shim, crankshaft magneto / spessore albero motore	nach Bedarf as required a richiesta
	944 586	Ausgleichscheibe 30,4/40,5/0,2 mm / shim, crankshaft magneto / spessore albero motore	nach Bedarf as required a richiesta
4	932 581	Rillenkugellager 6206 / ball bearing, crankshaft, magneto side / cuscinetto banco destro	1
5	245 400	Federring A18 / lock washer 18 / rondella grower 18	1
6	942 225	Sechskantmutter M18 x 1,5 / hex. nut, crankshaft, magneto side / dado fissaggio volano	1
7	234 040	Pumpenritzel 9 Z. / pump gear 9 t. / ingranaggio pompa D 9	1
8	232 750	Schrägkugellager 3205 / ball bearing, double row, crankshaft, clutch side / cuscinetto banco sinistro	1
9	247 290	Drehschieberhülse / spacer, disk valve / mozzo valvola	1
10	224 107	Drehschieber / disk valve / valvola rotante	1
11,12,13,	292 130	Primärtrieb kpl. (nur Antriebsrad und Kupplungskorb gemeinsam austauschen!) / drive gear with clutch drum assy. (re- place only drive gear with clutch drum assy.!) / campana frizione (cambiare solo insieme ingranaggio con campana frizione!)	1

Bild-Nr. Ill. No. Fig.	Teile-Nr. Part No. Codice	B e z e i c h n u n g D e s c r i p t i o n D e s c r i z i o n e	Stück Qty Qtà
12	945 757	Federring A18 / lock washer 18 / rondella grower 18	1
13	242 615	Bundmutter M18 x 1,5 / nut, crankshaft, clutch side / dado fissaggio ingranaggio albero motore	1
14	246 011	Scheibenfeder 3 x 5 / key, Woodruff, crankshaft, magneto side / chiavella destra albero motore	1
15	246 570	Scheibenfeder 4 x 5 / key, Woodruff, crankshaft, clutch side / chiavella sinistra albero motore	1
16	932 904	Kolbenbolzenkäfig / needle bearing, piston pin / gabbia a rulli spinotto . .	1
17,18,	293 420	Kolben kpl. 72,0 Ø m. Ring, Standard / piston assy. w. ring 72,0 Ø, standard / pistone 72,0 mm con segmento, standard .	1
	293 421	Kolben kpl. 72,25 Ø m. Ring, 1. Schliff / piston assy. w. ring 72,25 Ø, 1st oversize / pistone 72,25 mm con segmento, 1a maggiorazione	1
	293 422	Kolben kpl. 72,5 Ø m. Ring, 2. Schliff / piston assy. w. ring 72,5 Ø, 2nd over- size / pistone 72,5 mm con segmento, 2a maggiorazione	1
	293 423	Kolben kpl. 72,75 Ø m. Ring, 3. Schliff / piston assy. w. ring 72,75 Ø, 3rd oversize / pistone 72,75 mm con segmento, 3a maggiorazione	1
18	215 235	ETL-Ring 72,0 Ø, Standard / SEMI-trapez ring 72,0 Ø, standard / segmento ETL 72,0 mm, standard	1
	215 236	ETL-Ring 72,25 Ø, 1. Schliff / SEMI- trapez ring 72,25 Ø, 1st oversize / segmento ETL 72,25 mm, 1a maggiorazione	1
	215 237	ETL-Ring 72,5 Ø, 2. Schliff / SEMI- trapez ring 72,5 Ø, 2nd oversize / segmento ETL 72,5 mm, 2a maggiorazione .	1
	215 238	ETL-Ring 72,75 Ø, 3. Schliff / SEMI- trapez ring 72,75 Ø, 3rd oversize / segmento ETL 72,75 mm, 3a maggiorazione	1
19	916 185	Kolbenbolzen / piston pin / spinotto . .	1

Bild-Nr. Ill. No. Fig.	Teile-Nr. Part No. Codice	B e z e i c h n u n g D e s c r i p t i o n D e s c r i z i o n e	Stück Qty Qtà
20	945 735	Nullhakenring 18 / circlip, piston pin / seger spinotto	2
21	230 552	Dichtung für Zylinderflansch / gasket, cylinder base / guarnizione cilindro . . .	1
22 - 41,49	293 545	Zylinder mit Auslaßschieber kpl. / cylinder with exhaust valve assy. / cilindro con valvola scarico completo . .	1
22	223 115	Zylinder mit Büchse kpl. / cylinder with sleeve assy. / cilindro con camicia . . .	1
23	253 240	Schieberstange / valve rod / colonnetta .	1
24	249 030	Gewindehülse M6 / thread sleeve / bussola	1
25	253 280	Auslaßschieber 72 mm für Standard und 1. Schliff / exhaust valve 72 mm, standard and 1st oversize / valvola scarico 72 mm, standard e 1a maggiorazione	1
25	253 282	Auslaßschieber 72,5 mm für 2. und 3. Schliff / exhaust valve 72,5 mm, 2nd and 3rd oversize / valvola scarico 72,5 mm, 2a e 3a maggiorazione	1
26	247 580	Distanzring 12,1/14,7/2 / distance ring / spessore	2
	247 580	Distanzring 12,1/14,7/2 / distance ring / spessore	nach Bedarf as required a richiesta
27	230 530	O-Ring 6-1,7 / O-ring / anello	1
28	239 940	Druckfeder / spring / molla	1
29	230 255	Dichtung / gasket / guarnizione	1
30	253 270	Schieberstangenführung / valve rod housing / corpo guida valvola	1
31	945 751	Federring A6 / lock washer / rondella grower	2
32	241 930	Zylinderschraube M6 x 20 / cyl. screw / vite	2
33	260 720	Schieberbalg / bellows / soffietto	1
34	866 710	Kabelbinder 20 mm / clamp / fascetta . . .	1
35	242 771	Sechskantmutter M6 / hex. nut / dado . . .	1

Bild-Nr. Ill. No. Fig.	Teile-Nr. Part No. Codice	B e z e i c h n u n g D e s c r i p t i o n D e s c r i z i o n e	Stück Qty Qtà
36	227 900	Fixierscheibe 6,2/20/2 / washer / rondella	2
37	253 250	Schieberkolben / valve piston / pistone valvola	1
38	842 040	Sicherungsmutter M6 / nut / dado	1
39	251 920	Kabelbinder 50 mm / clamp / fascetta	1
40	210 080	Schieberabdeckung / valve cover / coperchio valvola	1
41	260 750	Spannband / strap / gommino fissaggio	1
42	240 091	Stiftschraube M8 x 50/20 / stud, cylinder head / colonnetta fissaggio testa	5
43	840 610	Stiftschraube M8 x 49/15 / stud, cylinder head / colonnetta	1
44	831 790	O-Ring 78-2 / O-ring / anello	1
45	230 200	O-Ring 142-3 / O-ring / anello	1
46	213 740	Zylinderkopf / cylinder head / testa cilindro	1
47	250 311	Scheibe 8,4 / washer, cylinder head nut / ranella fissaggio testa	6
48	842 326	Sechskantmutter M8 / hex. nut, cylinder head / dado fissaggio testa	6
49	224 090	Ablaufrohr / tube / tubo	2
50	899 786	Schraubensicherungsmittel 6 ccm, LOCTITE 242 blau / means of securing, LOCTITE blue, 6 c.c. / flacone LOCTITE blu 6 cc	nach Bedarf as required a richiesta
51	292 024	Kurbelwellen-Reparatursatz / crankshaft repair set / gruppo biella completo	1
52	223 120	Zylinderbüchse / cylinder sleeve / camicia cilindro	1



Getriebe
Transmission
Trasmissione

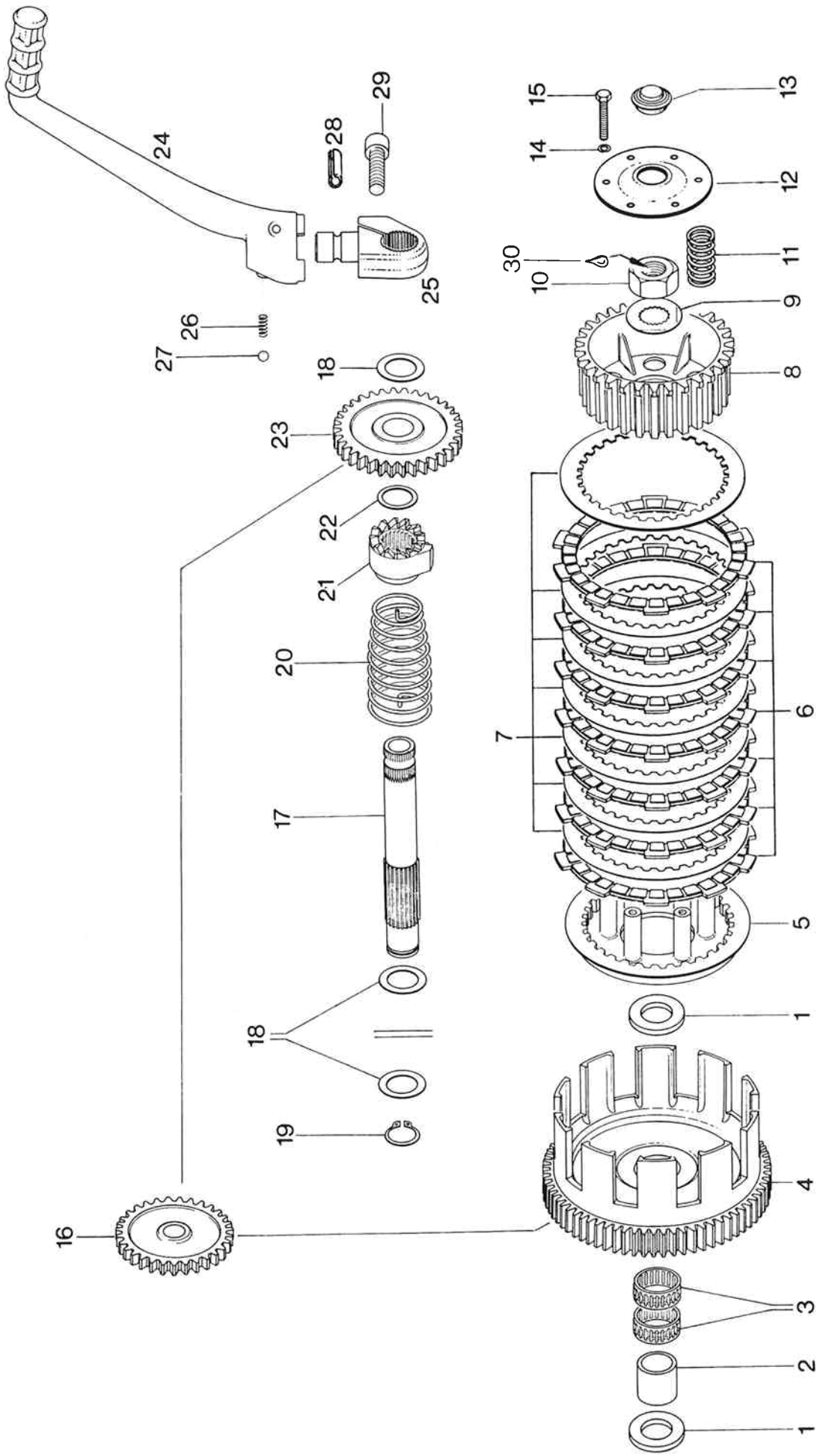
Bild-Nr. Ill. No. Fig.	Teile-Nr. Part No. Codice	B e z e i c h n u n g D e s c r i p t i o n D e s c r i z i o n e	244 GS / 244 MC	
			Stück Qty/Qtà	
1 - 25	281 042	Getriebe kpl. für Ausführung GS / transmission assy. for execution GS / cambio completo per esecuzione GS . . .	1	-
1 - 25	281 075	Getriebe kpl. für Ausführung MC / transmission assy. for execution MC / cambio completo per esecuzione MC . . .	-	1
1	237 540	Vorgelegewelle 12 Z. / clutch shaft / albero primario	1	-
1	237 560	Vorgelegewelle 13 Z. / clutch shaft / albero primario	-	1
2	232 795	Nadelkäfig 20x24x12 / needle bearing, clutch shaft / gabbia a rulli albero primario	1	1
3	235 620	Losrad 17 Z. / gear 7th, clutch shaft / ingranaggio 4 primario	1	1
4	227 475	Anlaufscheibe 24,2/27,5/2,3 / thrust washer, clutch shaft / spessore cambio albero primario	1	1
5	245 340	Sprengring 24 / snapring / seger cambio	4	4
6	235 602	Schaltrad 15 Z. / gear 3rd, clutch shaft / ingranaggio 3 primario	1	1
7	227 440	Anlaufscheibe 20,2/27,5/1 / thrust washer, clutch shaft / spessore cambio albero primario	1	-
7	227 445	Anlaufscheibe 21,2/27,5/1 / thrust washer, clutch shaft / spessore cambio albero primario	-	1
8	232 790	Nadelkäfig 20x24x12 / needle bearing, clutch shaft / gabbia a rulli albero primario	1	-
8	232 805	Nadelkäfig 21x25x13 / needle bearing, clutch shaft / gabbia a rulli albero primario	-	1
9	235 100	Losrad 23 Z. / gear 5th, clutch shaft / ingranaggio 5 primario	1	-

Bild-Nr. Ill. No. Fig.	Teile-Nr. Part No. Codice	B e z e i c h n u n g D e s c r i p t i o n D e s c r i z i o n e	244 GS / 244 MC Stück Qty/Qtà	
9	235 660	Losrad 22 Z. / gear 5th, clutch shaft / ingranaggio 5 ^o primario	-	1
10	235 042	Festräd 15 Z. / gear 2 nd , clutch shaft / ingranaggio 2 ^o primario	1	-
10	235 646	Festräd 13 Z. / gear 2 nd , clutch shaft / ingranaggio 2 ^o primario	-	1
11	237 454	Hauptwelle / main shaft / albero secondario	1	1
12	232 800	Nadelkäfing 21x25x13 / needle bearing, main shaft / gabbia a rulli albero secondario	1	1
13	232 740	Nadelkäfing 21x25x10 / needle bearing, main shaft / gabbia a rulli albero secondario	1	1
14	235 053	Losrad 28 Z. / gear 2 nd , main shaft / ingranaggio 2 ^o sekundario	1	-
14	235 658	Losrad 23 Z. / gear 2 nd , main shaft / ingranaggio 2 ^o sekundario	-	1
15	227 465	Anlaufscheibe 22/30/2,6 / thrust washer, main shaft / spessore cambio albero sekundario	3	3
16	235 113	Schaltrad 21 Z. / gear 5th, main shaft / ingranaggio 5 ^o sekundario	1	1
17	235 610	Losrad 21 Z. / gear 3 rd , main shaft / ingranaggio 3 ^o sekundario	1	1
18	235 633	Schaltrad 19 Z. / gear 4th, main shaft / ingranaggio 4 ^o sekundario	1	1
19	944 468	Anlaufscheibe 20,5/30/1 / thrust washer, main shaft / spessore albero secondario	1	1
20	232 790	Nadelkäfing 20x24x12 / needle bearing, main shaft / gabbia a rulli albero secondario	1	1
21	235 593	Losrad 32 Z. / gear 1st, main shaft / ingranaggio 1 ^o sekundario	1	-
21	235 473	Losrad 31 Z. / gear 1st, main shaft / ingranaggio 1 ^o sekundario	-	1

Bild-Nr. Ill. No. Fig.	Teile-Nr. Part No. Codice	B e z e i c h n u n g D e s c r i p t i o n D e s c r i z i o n e	244 GS / 244 MC Stück Qty/Qtà	MC
22	227 430	Anlaufscheibe 17,2/30/1 / thrust washer, main shaft / spessore albero secondario	1	1
23	230 400	O-Ring 18-1,5 / O-ring, main shaft / anello tenuta olio albero secondario . .	1	1
24	245 320	Sicherungsblech NA20 / washer, main shaft locking / rondella fermo dado pignone	1	1
25	242 605	Sechskantmutter M18 x 1,5 / hex. nut, main shaft / dado frizione	1	1
26	247 225	Distanzhülse 20/28/8,5 / spacer, sprocket / corteco albero secondario . .	1	1
27	* 236 951	Kettenrad 14 Z. / sprocket / pignone . .		1
	236 950	Kettenrad 13 Z. / sprocket / pignone . .	1	1
	* 236 952	Kettenrad 15 Z. / sprocket / pignone . .	1	
	236 953	Kettenrad 16 Z. / sprocket / pignone . .	1	1
28	239 640	Haarnadelfeder / spring, transmission actuating lever / molla	1	1
29	427 070	Scheibe 18,2/34/1 / thrust washer, transmission actuating lever / spessore	1	1
30	258 575	Schwenkhebel / lever, transmission actuating / piastra portamolla cambio .	1	1
31	237 437	Schaltwelle / shift shaft / albero cambio	1	1
32	945 790	Sicherungsscheibe 12 / retaining ring, shift shaft / seger albero cambio . . .	2	2
33	944 851	Ausgleichscheibe 14,3/20/0,5 / shim, shift shaft / spessore albero cambio . .	1	1
34	430 110	O-Ring 10-2,7 / O-ring, shift shaft / anello gomma albero cambio	2	2
35	258 645	Schaltklinke / pawl / grimagliera desmodromico	1	1
36	239 650	Klinkenfeder / spring, pawl / molla ritorno grimagliera	1	1
37	245 330	Sicherungsring 10 x 1 / snapring / seger fissaggio grimagliera	1	1
38	241 805	Exzentrerschraube M12 x 1 / screw, pawl positioning / vite registro	1	1

Bild-Nr. Ill. No. Fig.	Teile-Nr. Part No. Codice	B e z e i c h n u n g D e s c r i p t i o n D e s c r i z i o n e	244 GS / 244 MC Stück Qty/Qtà	
39	242 270	Sechskantmutter M12 x 1 / hex. nut, pawl positioning locking / dado registro grimagliera	1	1
40	827 265	Scheibe 12,5/21,5/2 / washer, shift drum / spessore desmodromico	1	1
41	258 745	Schaltwalze kpl. / shift drum assy. / desmodromico	1	1
42	258 725	Schaltgabel 4./5. Gang / fork, shifting 4-5 / bandieretta cambio 4-5	1	1
43	258 715	Schaltgabel 2. Gang / fork, shifting 2 / bandieretta cambio 2	1	1
44	258 705	Schaltgabel 1./3. Gang / fork, shifting 1-3 / bandieretta cambio 1-3	1	1
45	258 540	Schaltstange / pin, shift fork guide / asta bandieretta	2	2
46 - 50	248 857	Fußschalthebel kpl. / shift lever assy. / leva cambio completa	1	1
46	248 855	Fußschalthebel / shift lever / leva cambio	1	1
47	239 770	Hebelfeder / spring / molla	1	1
48	240 145	Lagerschraube M6 x 18 / bearing screw / vite	1	1
49	248 905	Klapphebel / folding lever / leva piegabibile	1	1
50	260 545	Klapphebelmuffe / rubber, folding lever / gommino leva piegabibile	1	1
51	241 930	Zylinderschraube M6 x 20 / cyl. screw / vite a testa cilindro	1	1
52	899 786	Schraubensicherungsmittel 6 ccm, LOCTITE 242, blau / means of securing, LOCTITE blue, 6 c.c. / flacone LOCTITE blu 6 cc.	nach Bedarf as required a richiesta	
53	297 431	LOCTITE-Antisize 10 g	-	" -
54		BP Energ grease LS 3	-	" -

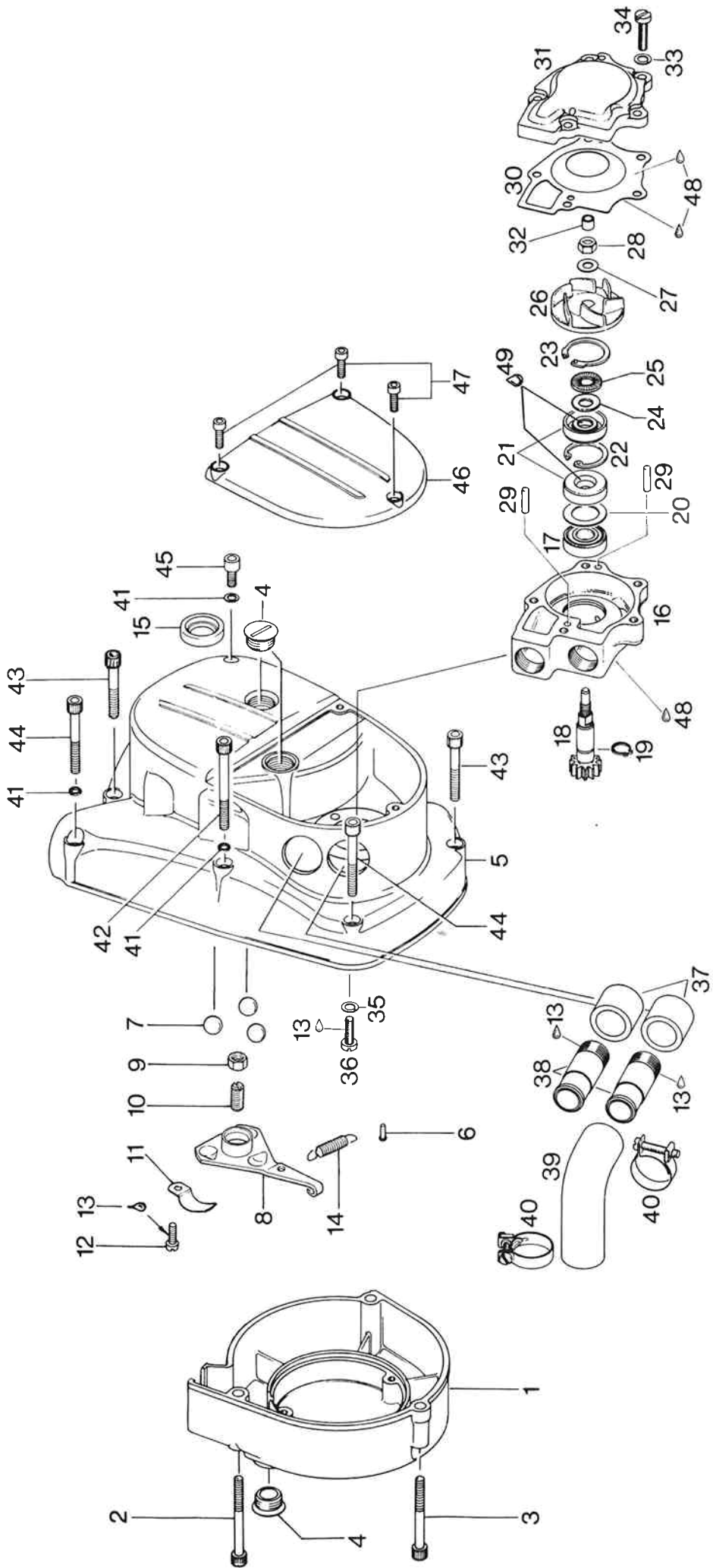
* Diese Teile sind serienmäßig montiert /
these parts are mounted standard /
questi pezzi sono montati standard



Kupplung, Kickstarter
Clutch, Kick Start
Frizione, Messa in Moto

Bild-Nr. Ill. No. Fig.	Teile-Nr. Part No. Codice	B e z e i c h n u n g D e s c r i p t i o n D e s c r i z i o n e	Stück Qty Qtà
1	227 600	Anlaufscheibe 20,2/35/3 / thrust washer, clutch drum / spessore campana frizione .	2
2	232 700	Innenring / inner race, clutch drum / boccola campana frizione	1
3	232 650	Nadelkäfig 25x29x10 / needle bearing, clutch drum / gabbia a rulli campana frizione	2
4	292 130	Primärtrieb kpl. (nur Antriebsrad mit Kupplungskorb gemeinsam austauschen!) / drive gear with clutch drum assy. (re- place only drive gear with clutch drum assy.!) / campana frizione (cambiare solo insieme ingranaggio con campana frizione!)	1
5	259 570	Stützteller / plate, clutch, inner pressure / tamburello	1
6	259 566	Belaglamelle 3 mm / plate, clutch friction / disco frizione guarnito . . .	7
7	259 557	Stahllamelle 1 mm / plate, clutch outer pressure / disco frizione ferro . .	7
8	259 549	Mitnehmer / clutch hub / tamburello frizione	1
9	245 320	Sicherungsblech NA20 / washer, trans- mission shaft locking / rondella fissaggio dado frizione	1
10	242 605	Sechskantmutter M18 x 1,5 / hex. nut / dado frizione	1
11	239 745	Kupplungsfeder (Federn nut satzweise wechseln!) / spring, clutch (change springs only setwise!) / molla frizione (cambiare solo tutta la serie!)	6
12,13,	259 597	Druckplatte kpl. / plate assy. with thrust bearing / piattello completo . . .	1
12	259 592	Druckplatte / plate, clutch spring retaining / piattello	1
13	232 180	Drucklager 8x20x8,5 / thrust bearing, clutch spring retaining / cuscinetto . .	1

Bild-Nr. Ill. No. Fig.	Teile-Nr. Part No. Codice	B e z e i c h n u n g D e s c r i p t i o n D e s c r i z i o n e	Stück Qty Qtà
14	945 750	Federring A5 / lock washer / rondella grower, fissaggio piattello frizione . . .	6
15	241 770	Sechskantschraube M5 x 25 / screw, hex. head / vite fissaggio piattello frizione	6
16	235 205	Zwischenrad kpl. / gear, kick start idler / ingranaggio intermedio messa in moto	1
17	237 428	Starterwelle / kick start shaft / albero messa in moto	1
18	944 468	Anlaufscheibe 20,5/30/1 / thrust washer / spessore messa in moto	3
19	945 660	Sicherungsring 20 x 1,2 / snapring, kick start shaft / seger messa in moto . . .	1
20	239 761	Kickstarterfeder / spring, kick start return / molla di richiamo messa in moto	1
21	228 185	Sperrad / ratchet gear, kick start / innesto messa in moto	1
22	227 480	Anlaufscheibe 20,2/25,5/1 / thrust washer, kick gear / spessore albero messa in moto	1
23	235 215	Starterrad kpl. / gear, kick start drive / ingranaggio messa in moto . . .	1
24 - 28	248 100	Kickstarterhebel kpl. / lever assy., kick start / pedale messa in moto . . .	1
24	248 075	Kickstarterhebel / lever, kick start / pedale messa in moto	1
25	248 090	Kickstarternabe / hub, kick start / parte inferiore messa in moto	1
26	239 537	Druckfeder / spring, kick start lever / molla sfera messa in moto	1
27	232 440	Kugel 7/32" / ball, kick start lever / sfera messa in moto	1
28	929 450	Spannhülse 4 x 28 / dowel tube / perno tenditore	1
29	840 991	Zylinderschraube M8 x 30 / cyl. screw / vite fissaggio messa in moto	1
30	899 786	Schraubensicherungsmittel 6 ccm, LOCTITE 242, blau / means of securing, LOCTITE blue, 6 c.c. / flacone LOCTITE blu 6 cc.	nach Bedarf as required a richiesta

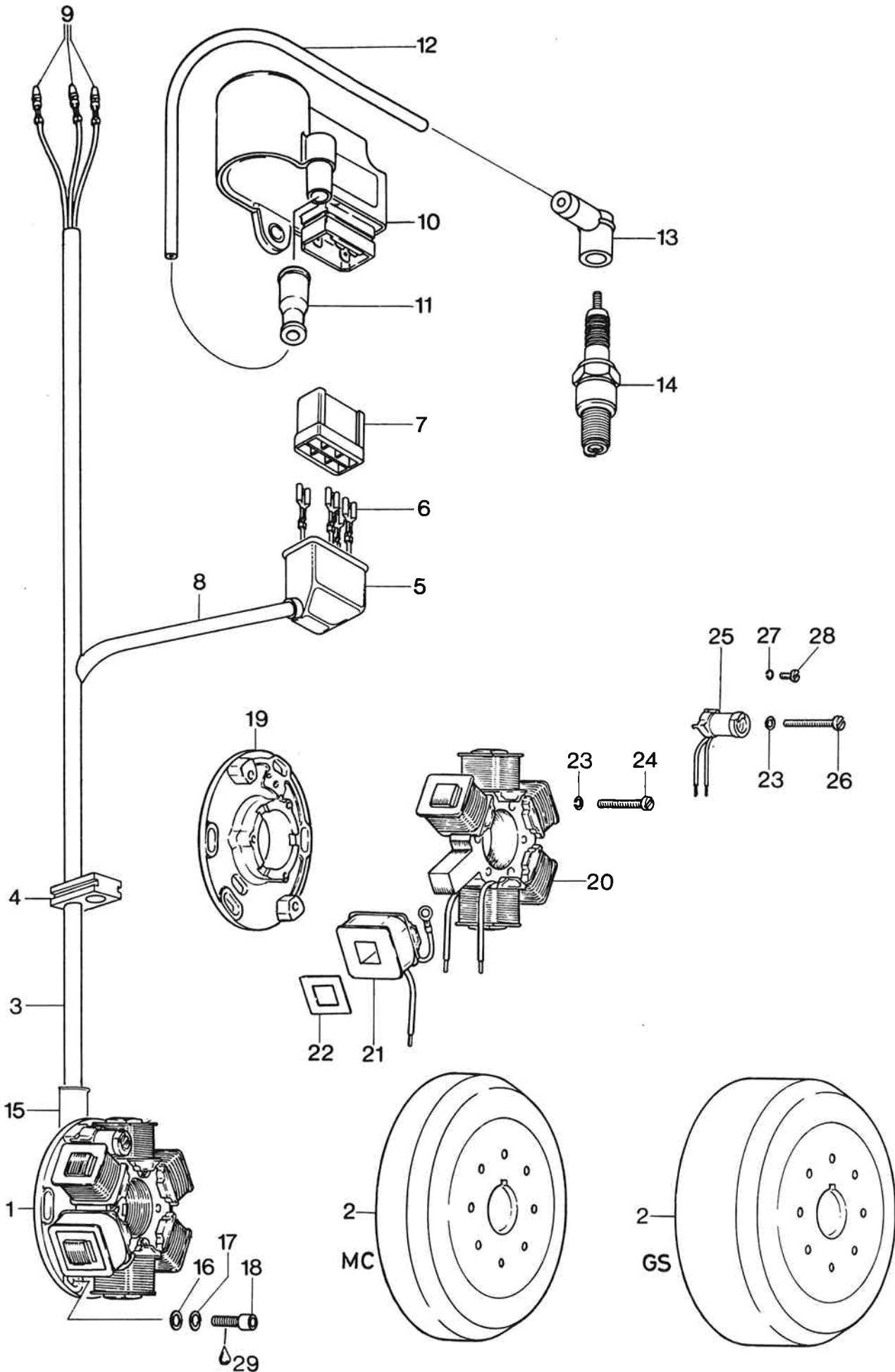


Zünderdeckel, Kupplungsdeckel, Wasserpumpe
 Magneto Cover, Clutch Cover, Water Pump
 Coperchio Volano, Coperchio Frizione, Pompa Acqua

Bild-Nr. Ill. No. Fig.	Teile-Nr. Part No. Codice	B e z e i c h n u n g D e s c r i p t i o n D e s c r i z i o n e	Stück Qty Qtà
1	212 151	Zünderdeckel für Magnetzündler 12V 60W / magneto cover for magneto generator 12V 60W / coperchio volano per volano 12V 60W	1
2	241 761	Zylinderschraube M6 x 50 / cyl. screw / vite fissaggio coperchio	2
3	241 821	Zylinderschraube M6 x 45 / cyl. screw / vite fissaggio coperchio	1
4	241 800	Verschlußschraube M18 x 1,5 / plug, adjustment / tappo coperchio volano . . .	3
5,6,	210 018	Kupplungsdeckel kpl. / clutch cover assy. / coperchio frizione completo . . .	1
6	949 030	Halbrundkerbnagel 3 x 8 / drive pin / spina	1
7	232 150	Kugel 12 mm / ball / sfera	3
8	259 945	Ausrückteller / cam assy., clutch release / chiocciola frizione	1
9	942 670	Sechskantmutter M8 / hex. nut / dado frizione	1
10	240 310	Gewindestift M8 x 19,5 / screw, clutch adjustment / vite registro frizione . . .	1
11	239 901	Blattfeder / spring, clutch cam retaining / innesto frizione	1
12	240 560	Zylinderschraube M5 x 12 / screw, slot head / vite fissaggio innesto chiocciola	1
13	899 786	Schraubensicherungsmittel 6 ccm, LOCTITE 242, blau / means of securing, LOCTITE blue, 6 c.c. / flacone LOCTITE blu 6 cc.	nach Bedarf as required a richiesta
14	239 635	Zugfeder / spring, clutch cam return / molla chiocciola frizione	1
15	230 355	Wellendichtring 20x28x6 / seal, kick start shaft / corteco messa in moto . . .	1
16 - 34	293 265	Wasserpumpe kpl. / water pump assy. / pompa acqua completa	1

Bild-Nr. Ill. No. Fig.	Teile-Nr. Part No. Codice	B e z e i c h n u n g D e s c r i p t i o n D e s c r i z i o n e	Stück Qty Qtà
16	222 070	Wasserpumpengehäuse / housing, water pump / corpo pompa acqua	1
17	232 100	Rillenkugellager 6000 / ball bearing / cuscinetto	1
18	237 750	Pumpenwelle 11 Z. / pump shaft 11 t. / albero pompa D 11	1
19	245 330	Sicherungsring 10 x 1 / snapring / seger .	1
20	227 480	Ausgleichscheibe 20,2/25,5/1 / shim / spessore	1
21	230 195	Wellendichtring 10x26x7 / oil seal / corteco	2
22	245 560	Sicherungsring 24 x 1,2 / snapring / seger	1
23	245 555	Sicherungsring 26 x 1,2 / snapring / seger	1
24	239 930	Tellerfeder A16 / spring washer 16 / rondella grower 16	1
25	227 155	Reibscheibe / friction washer / ranella .	1
26	922 035	Lauftrad / impeller, water pump / girante .	1
27	244 211	Scheibe 6,4 / washer / ranella	1
28	842 042	Sicherungsmutter M6 / lock nut / dado . .	1
29	232 730	Nadelrolle 4x15,8 G3 / needle roll / perno	2
30	222 090	Leitblech / guiding plate / lamiera di guida	1
31,32,	222 081	Wasserpumpendeckel kpl. / cover assy., water pump / coperchio completo pompa acqua	1
32	233 520	Lagerbüchse / bearing bushing / bussola .	1
33	945 750	Federring A5 / lock washer 5 / rondella grower 5	5
34	840 351	Zylinderschraube M5 x 20 / cyl. screw / vite a testa cilindro	5
35	945 750	Federring A5 / lock washer 5 / rondella grower 5	3
36	240 761	Zylinderschraube M5 x 16 / cyl. screw / vite a testa cilindro	3

Bild-Nr. Ill. No. Fig.	Teile-Nr. Part No. Codice	B e z e i c h n u n g D e s c r i p t i o n D e s c r i z i o n e	Stück Qty Qtà
37	222 105	Dichtschauch / sealing tube / tubo guarnizione	2
38	224 095	Zulaufrohr / tube / tubo	2
39	222 100	Kühlwasserschlauch / water tube / tubo acqua	1
40	251 870	Schlauchschele 23 kpl. / hose clamp assy. / fascetta tubo completa	2
41	830 890	Dichtring 6,2/8,9/1 / gasket, oil level plug / rondella brugola livello olio	3
42	241 761	Zylinderschraube M6 x 50 / screw, allen head / vite a testa cilindro	1
43	241 811	Zylinderschraube M6 x 35 / screw, allen head / vite a testa cilindro	5
44	241 816	Zylinderschraube M6 x 40 / screw, allen head / vite a testa cilindro	3
45	840 371	Zylinderschraube M6 x 11,5 / plug, oil level / brugola livello olio	1
46	212 066	Pumpendeckel / pump cover / coperchio pompa	1
47	241 841	Zylinderschraube M5 x 12 / screw, allen head / vite a testa cilindro	3
48	297 386	Silastic	nach Bedarf as required
49	897 161	Molykote 111, 100 g	a richiesta - " -



Magnetzünder-Generator 12V 60W
 Magneto-Generator 12V 60W
 Volano 12V 60W

Bild-Nr. Ill. No. Fig.	Teile-Nr. Part No. Codice	B e z e i c h n u n g D e s c r i p t i o n D e s c r i z i o n e	244 GS / 244 MC Stück Qty/Qtà
1 - 13	292 229	Magnetzünder-Generator kpl. für Ausführung GS / magneto-generator assy. for execution GS / volano completo per esecuzione GS	1 -
1 - 13	292 345	Magnetzünder-Generator kpl. für Ausführung MC / magneto-generator assy. for execution MC / volano completo per esecuzione MC	- 1
1,3 - 9	292 232	Ankerplatte kpl. / stator plate assy. / piatto volano completo	1 1
2	292 276	Magnetrad kpl. für Ausführung GS / flywheel assy. for execution GS / parte rotante volano completa per esecuzione GS	1 -
2	292 277	Magnetrad kpl. für Ausführung MC / flywheel assy. for execution MC / parte rotante volano completa per esecuzione MC	- 1
3	260 435	Isolierschlauch 600 mm / protection hose / guaina impianto	1 1
4	260 345	Leitungstülle / cable grommet / gommina filo volano	1 1
5	960 791	Schutzkappe / protection cap / cuffia centralina	1 1
6	864 011	Steckhülse / Faston connector / spinetta Faston	4 4
7	865 453	Steckergehäuse / connector housing / guaina	1 1
8	260 467	Isolierschlauch 285 mm / protection hose / guaina impianto	1 1
9	964 062	Steckerstift / contact pin / spina a baionetta	3 3
10	264 475	Elektronikbox / electronic box / centralina	1 1
11	960 550	Regenschutzkappe / protection cap / cappuccio gomma filo candela	1 1

Bild-Nr. Ill. No. Fig.	Teile-Nr. Part No. Codice	B e z e i c h n u n g D e s c r i p t i o n D e s c r i z i o n e	244 GS / 244 MC Stück Qty/Qtà	
12	864 075	Zündleitung 440 mm / ignition cable / filo candela	1	1
13	865 200	Zündleistungsstecker / spark plug protector / cappuccio candela	1	1
14	899 576	Zündkerze W300 T2 (W2C) / spark plug W300 T2 (W2C) / candela W300 T2 (W2C) .	1	1
15	224 030	Kabelfixierung / holder, cables / impianto	1	1
16	927 570	Scheibe 5,3 / washer / rondella brugola fissaggio piatto	2	2
17	945 750	Federring A5 / lock washer 5 / rondella grower 5	2	2
18	840 510	Zylinderschraube M5 x 16 / screw, allen head / vite a testa cilindro	2	2
19	866 245	Ankerplatte / stator plate alone / piatto nudo volano	1	1
20,21,22,	264 675	Ankersatz kpl. / coil set with iron core assy. / gruppo bobine completo . .	1	1
21	866 230	Ladeanker / charging coil / bobina alimentazione	1	1
22	264 680	Kurzschlußplatte / damping plate / piatto ammortizzatore	1	1
23	945 758	Federring A4 / lock washer 4 / rondella grower 4	4	4
24	941 281	Zylinderschraube M4 x 25 / cyl. screw / vite	3	3
25	264 665	Steueranker / trigger coil / bobina commando	1	1
26	241 327	Zylinderschraube M4 x 28 / cyl. screw / vite	1	1
27	245 090	Federring A3 / lock washer 3 / rondella grower 3	1	1
28	941 205	Zylinderschraube M3 x 6 / cyl. screw / vite	1	1
29	899 786	Schraubensicherungsmittel 6 ccm, LOCTITE 242, blau / means of securing, LOCTITE blue, 6 c.c. / flacone LOCTITE blu 6 cc.	nach Bedarf as required a richiesta	

